

Arche

World's most cost-effective femtosecond laser

A suite of ultrafast fiber lasers with 100 MHz range repetition rates, centered at 1560nm, delivering < 500 fs. Arche becomes a workhorse tool for many research and industrial applications requiring reliability and affordability.



Central Wavelength
1560 nm

Repetition Rate
100 MHz

Average Power
> 4 mW

Pulse Duration
< 500 fs

/ Applications



- Amplifier Seeding
- Optical Characterization
- Ultrafast Spectroscopy
- Testing at telecom wavelengths

Arche

/ Technical Specifications

Wavelength:	Repetition Rate	Pulse Duration:	Average Power:
1560 nm	100 MHz	< 500 fs	> 4 mW

Central wavelength: 1560 nm

Repetition Rate: 100 MHz (customizable to 50 MHz)

Average Power: > 4mW

Pulse Duration: < 500 fs

Polarization: Linearly Polarized

Output Port: Single Mode Fiber / 0.25 m

Optical Output: FC/APC Connector

Synchronization: Optical Signal

Pulse Energy: > 40 pJ

Spatial Mode Quality (M²): < 1.2

Cooling: Air cooling

Power Requirements: 220/110V 50-60 Hz

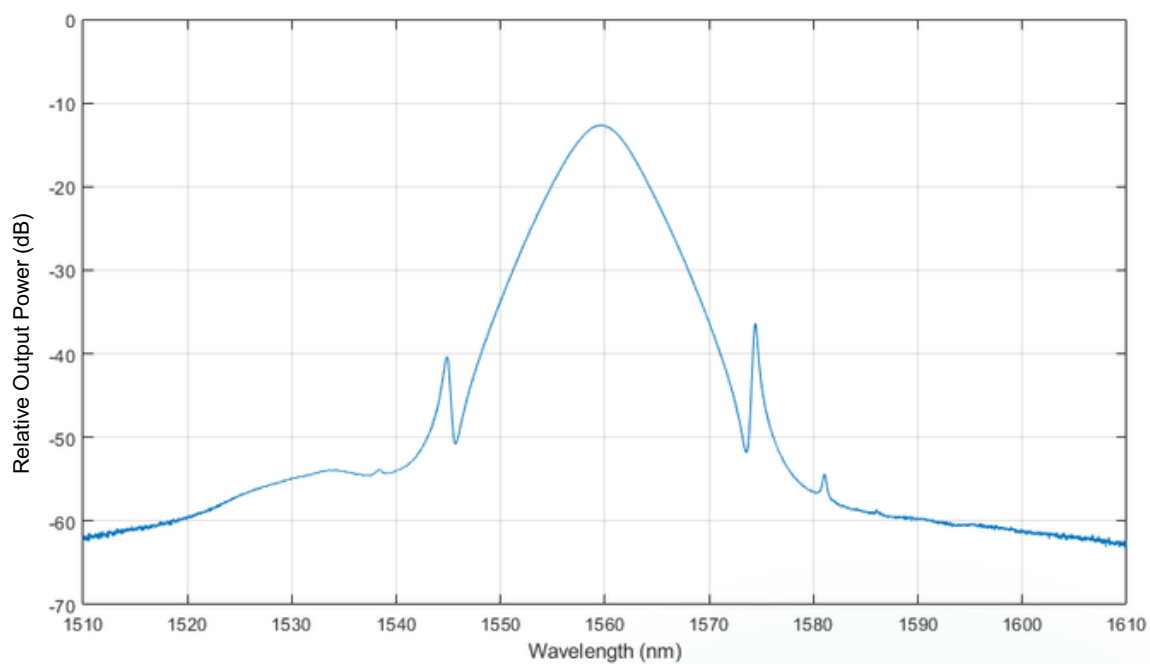
Operating Temperature: 20 - 30 °C

Storage Temperature 0 - 60 °C

OTHER DETAILED SPECS UNDER REQUEST

Arche

/ Optical Spectrum



Arche

/ Additional information



Laser Security:

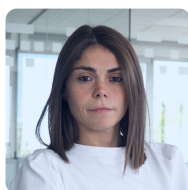
This product is a Class 2 laser.

Appropriate safety measures according to such laser class should be taken in its installation and use.

Warranty:

12 months warranty or > 10,000h of continuous operation.

/ FYLA contact



Sales contact

Gaia Sardiello

gsardiello@fyla.com

+34 674 94 75 29

Support contact

support@fyla.com

+34 607 97 10 21

*The price may be different in the APAC area.